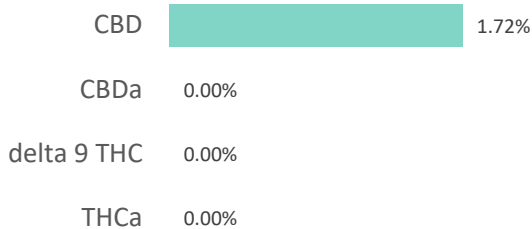
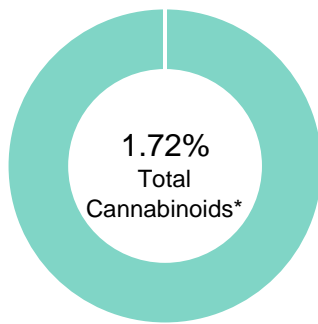


**Good CBD Shop CBD Isolate**

<b>Batch ID:</b>		<b>Test ID:</b>	3704252.0014
<b>Reported:</b>	24-Sep-2019	<b>Method:</b>	TM14
<b>Type:</b>	Concentrate		
<b>Test:</b>	Potency		

**CANNABINOID PROFILE**


Compound	LOQ (%)	Result (%)	Result (mg/g)
Delta 9-Tetrahydrocannabinolic acid (THCA-A)	0.30	0.00	0.0
Delta 9-Tetrahydrocannabinol (Delta 9THC)	0.15	0.00	0.0
Cannabidiolic acid (CBDA)	0.27	0.00	0.0
Cannabidiol (CBD)	0.15	1.72	17.2
Delta 8-Tetrahydrocannabinol (Delta 8THC)	0.17	0.00	0.0
Cannabinolic Acid (CBNA)	0.42	0.00	0.0
Cannabinol (CBN)	0.18	0.00	0.0
Cannabigerolic acid (CBGA)	0.27	0.00	0.0
Cannabigerol (CBG)	0.15	0.00	0.0
Tetrahydrocannabivarinic Acid (THCVA)	0.26	0.00	0.0
Tetrahydrocannabivarin (THCV)	0.14	0.00	0.0
Cannabidivarinic Acid (CBDVA)	0.25	0.00	0.0
Cannabidivarin (CBDV)	0.14	0.00	0.0
Cannabichromenic Acid (CBCA)	0.23	0.00	0.0
Cannabichromene (CBC)	0.27	0.00	0.0
<b>Total Cannabinoids</b>		<b>1.72</b>	<b>17.20</b>
Total Potential THC**		0.00	0.00
Total Potential CBD**		1.72	17.20


**NOTES:**

N/A

% = % (w/w) = Percent (Weight of Analyte / Weight of Product)

\* Total Cannabinoids result reflects the absolute sum of all cannabinoids detected.

\*\* Total Potential THC/CBD is calculated using the following formulas to take into account the loss of a carboxyl group during decarboxylation step.

$$\text{Total THC} = \text{THC} + (\text{THCa} * (0.877)) \text{ and Total CBD} = \text{CBD} + (\text{CBDa} * (0.877))$$
**FINAL APPROVAL**


**Daniel Weidensaul**  
 24-Sep-2019  
 2:35 PM

PREPARED BY / DATE



**David Green**  
 24-Sep-2019  
 2:40 PM

APPROVED BY / DATE

Testing results are based solely upon the sample submitted to Botanacor Laboratories, LLC, in the condition it was received. Botanacor Laboratories, LLC warrants that all analytical work is conducted professionally in accordance with all applicable standard laboratory practices using validated methods. Data was generated using an unbroken chain of comparison to NIST traceable Reference Standards and Certified Reference Materials. This report may not be reproduced, except in full, without the written approval of Botanacor Laboratories, LLC. ISO/IEC 17025:2005 Accredited A2LA Certificate Number 4329.02



## Global Cannabinoids

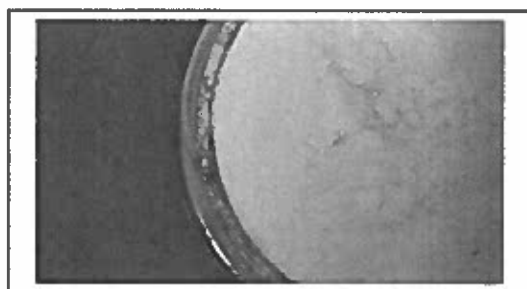
6445 S Tenaya Way  
NV 89113  
formulation@globalcannabinoids.io  
(904) 312-1834  
Lic. #74911

Sample: 1908CNS0184.0807

Strain: n/a  
Batch #: ID190829; Lot #: 082119;  
Sample Received: 09/04/2019; Report Created: 09/06/2019

## CBD isolate ID190829

Concentrates & Extracts, Cannabinoid Isolate, Other  
Harvest Process Lot: ; METRC Batch: ; METRC Sample:



## Safety

Pass Pesticides	Not Tested Microbials	Not Tested Mycotoxins	Not Tested pH
Pass Solvents	Pass Metals	Not Tested Foreign Matter	

## Cannabinoids

ND Total THC	99.371% Total CBD	ND THCa	NT Moisture
-----------------	----------------------	------------	----------------

Analyte	LOQ	Mass	Mass
	%	%	mg/g
CBDV	<LOQ	<LOQ	<LOQ
THCV	0.050	<LOQ	<LOQ
CBD	0.046	99.371	993.71
CBG	0.041	<LOQ	<LOQ
CBDa	0.024	<LOQ	<LOQ
CBGa	0.030	<LOQ	<LOQ
CBN	0.024	<LOQ	<LOQ
Δ9-THC	0.085	<LOQ	<LOQ
Δ8-THC	0.080	<LOQ	<LOQ
CBC	0.016	<LOQ	<LOQ
THCa	0.045	<LOQ	<LOQ
CBCa	0.073	<LOQ	<LOQ
<b>Total</b>		<b>99.371</b>	<b>993.71</b>

Total THC = THCa \* 0.877 + Δ9-THC + Δ8-THC  
Total CBD = CBDa \* 0.877 + CBD  
LOQ = Limit of Quantitation: The reported result is based on a dry-weight basis using the applicable moisture content for that sample; Unless otherwise stated all quality control samples performed within specifications established by the Laboratory.  
Notes:

## Terpenes

--	--	--

Analyte	LOQ	Mass	Mass
	mg/g	mg/g	%
d-3-Carene	0.100	<0.100	<0.0100
α-Bisabolol	0.100	<0.100	<0.0100
α-Humulene	0.100	<0.100	<0.0100
α-Pinene	0.100	<0.100	<0.0100
α-Terpinene	0.100	<0.100	<0.0100
β-Caryophyllene	0.100	<0.100	<0.0100
β-Myrcene	0.100	<0.100	<0.0100
β-Pinene	0.100	<0.100	<0.0100
Camphene	0.100	<0.100	<0.0100
Caryophyllene Oxide	0.100	<0.100	<0.0100
cis-Nerolidol	0.100	<0.100	<0.0100
δ-Limonene	0.100	<0.100	<0.0100
Eucalyptol	0.100	<0.100	<0.0100
γ-Terpinene	0.100	<0.100	<0.0100
Guaiol	0.100	<0.100	<0.0100
Linalool	0.100	<0.100	<0.0100
α-Ocimene	0.100	<0.100	<0.0100
p-Cymene	0.100	<0.100	<0.0100
Terpinolene	0.100	<0.100	<0.0100
trans-Nerolidol	0.100	<0.100	<0.0100
b-Ocimene	0.100	<0.100	<0.0100
<b>Total</b>		<b>0.000</b>	<b>0</b>

LOQ = Limit of Quantitation: The reported result is based on a sample weight with the applicable moisture content for that sample; Unless otherwise stated all quality control samples performed within specifications established by the Laboratory.  
Notes:

2952 Meade Ave  
Las Vegas, NV  
(702) 304-7878  
http://www.canalysislab.com

*Trevor Low*  
Trevor Low  
Lab Director

Confident Cannabis  
All Rights Reserved  
support@confidentcannabis.com  
(866) 506-5866



This product has been tested by Canalysis Laboratories using valid testing methodologies and a quality system as required by state law. Values reported relate only to the product tested. Canalysis Laboratories makes no claims as to the efficacy, safety or other risks associated with any detected or non-detected levels of any compounds reported herein. This Certificate shall not be reproduced except in full, without the written approval of Canalysis Laboratories.

## Global Cannabinoids

6445 S Tenaya Way  
NV 89113  
formulation@globalcannabinoids.io  
(904) 312-1834  
Lic. #74911

Sample: 1908CNS0184.0807

Strain: n/a  
Batch #: ID190829; Lot #: 082119;  
Sample Received: 09/04/2019; Report Created: 09/06/2019

## CBD isolate ID190829

Concentrates & Extracts, Cannabinoid Isolate, Other  
Harvest Process Lot: ; METRC Batch: ; METRC Sample:



### Pesticides

Pass

Analyte	LOQ	Limit	Mass	Status
	PPM	PPM	PPM	
Abamectin	0.010	0.200	ND	Pass
Acequinocyl	0.010	4.000	ND	Pass
Beta-Cyfluthrin	0.050	2.000	ND	Pass
Bifenazate	0.010	0.400	ND	Pass
Bifenthrin	0.010	0.100	0.011	Pass
Cypermethrin	0.010	1.000	ND	Pass
Daminozide	0.020	0.800	ND	Pass
Dimethomorph	0.010	2.000	ND	Pass
Etoxazole	0.010	0.400	ND	Pass
Fenhexamid	0.010	1.000	ND	Pass
Flonicamid	0.010	1.000	ND	Pass
Fludioxonil	0.010	0.500	ND	Pass
Imidacloprid	0.010	0.500	ND	Pass
Myclobutanil	0.010	0.400	ND	Pass
Paclobutrazol	0.010	0.400	ND	Pass
Piperonyl Butoxide	0.010	3.000	ND	Pass
Pyrethrins	0.010	2.000	ND	Pass
Quintozene	0.050	0.800	ND	Pass
Spinetoram	0.010	1.000	ND	Pass
Spinosad	0.010	1.000	ND	Pass
Spirotetramat	0.010	1.000	ND	Pass
Thiamethoxam	0.010	0.400	ND	Pass
Trifloxystrobin	0.010	1.000	ND	Pass

### Microbials

Not Tested

Analyte	Limit	Mass	Status
---------	-------	------	--------

Notes:

### Residual Solvents

Pass

Analyte	LOQ	Limit	Mass	Status
	PPM	PPM	PPM	
Acetonitrile	50.000	500.000	ND	Pass
Butanes	50.000	500.000	ND	Pass
Ethanol	50.000	500.000	<LOQ	Pass
Heptanes	50.000	500.000	ND	Pass
Isobutane	50.000	500.000	ND	Pass
Methanol	50.000	500.000	ND	Pass
n-Hexane	50.000	500.000	ND	Pass
Propane	50.000	500.000	ND	Pass

LOQ = Limit of Quantitation; The reported result is based on a sample weight with the applicable moisture content for that sample; Unless otherwise stated all quality control samples performed within specifications established by the Laboratory.  
Notes:

LOQ = Limit of Quantitation; The reported result is based on a sample weight with the applicable moisture content for that sample; Unless otherwise stated all quality control samples performed within specifications established by the Laboratory.  
Notes:

### Heavy Metals

Pass

Analyte	LOQ	Limit	Mass	Status
	PPB	PPB	PPB	
Arsenic	250.000	2000.000	309.733	Pass
Cadmium	250.000	820.000	<LOQ	Pass
Lead	250.000	1200.000	306.072	Pass
Mercury	2.500	400.000	ND	Pass

LOQ = Limit of Quantitation; The reported result is based on a sample weight with the applicable moisture content for that sample; Unless otherwise stated all quality control samples performed within specifications established by the Laboratory.  
Notes:

Notes:

### Mycotoxins

Not Tested

Analyte	LOQ	Limit	Mass	Status
---------	-----	-------	------	--------

2952 Meade Ave  
Las Vegas, NV  
(702) 304-7878  
http://www.canalysislab.com

Trevor Low  
Lab Director

Confident Cannabis  
All Rights Reserved  
support@confidentcannabis.com  
(866) 506-5866



This product has been tested by Analysis Laboratories using valid testing methodologies and a quality system as required by state law. Values reported relate only to the product tested. Analysis Laboratories makes no claims as to the efficacy, safety or other risks associated with any detected or non-detected levels of any compounds reported herein. This Certificate shall not be reproduced except in full, without the written approval of Analysis Laboratories.