



Certificate of Analysis

Powered by Confident Cannabis

Sample: 1910DBL0183.9576
METRC Sample:

Strain: NA

Ordered: 10/14/2019; Sampled: 10/14/2019; Completed: 10/16/2019

Mardi Gras

Plant, Flower - Cured, Indoor



Cannabinoids

- CBC
- CBCa
- CBD
- CBDa
- CBDV
- CBDVa
- CBG
- CBGa
- CBL
- CBN
- Δ8-THC
- Δ9-THC
- THCa
- THCV
- THCVa

Cannabinoids

0.669%



Total THC

16.821%



Total CBD

22.020%



Total Cannabinoids

NT



Moisture

Cannabinoid Profile

Analyzed by 300.16 UHPLC/PDA

Cannabinoid	Mass		LOQ
	%	mg/g	
CBC	<LOQ	<LOQ	0.025
CBCa	0.965	9.65	0.025
CBD	0.359	3.59	0.025
CBDa	18.771	187.71	0.025
CBDV	<LOQ	<LOQ	0.025
CBDVa	0.079	0.79	0.025
CBG	<LOQ	<LOQ	0.025
CBGa	1.088	10.88	0.025
CBL	<LOQ	<LOQ	0.025
CBN	<LOQ	<LOQ	0.025
Δ8-THC	<LOQ	<LOQ	0.025
Δ9-THC	0.025	0.25	0.025
THCa	0.734	7.34	0.025
THCV	<LOQ	<LOQ	0.025
THCVa	<LOQ	<LOQ	0.025
Total THC	0.669	6.69	
Total CBD	16.821	168.21	
Total	22.020	220.20	



Stacy Gardalen

Stacy Gardalen
Quality Control

Glen Marquez

Glen Marquez
Quality Control



4439 Polaris Ave
Las Vegas, NV
(702) 728-5180

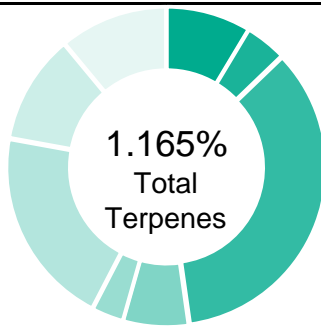
www.dblabslv.com

The reported result is based on a sample weight with the applicable moisture content for that sample. LOQ = Limit of Quantitation. Pesticide LOQ = Instrument Limit of Quantitation. NA = Not Analyzed. ND = Not Detected. NR = Not Reported. NT = Not Tested. PGR = Plant Growth Regulator. Unless otherwise stated all quality control samples performed within specifications established by the Laboratory. This product has been tested by DB Labs, LLC (MME# 61887736101164525768) using valid testing methodologies and a quality system as required by Nevada state law. Edibles are picked up prior to final packaging unless otherwise stated. Values reported relate only to the product tested. The uncertainty of measurement associated with the measurement result reported in this certificate is available from the organization upon request. DB Labs makes no claims as to the efficacy, safety or other risks associated with any detected or non-detected levels of any compounds reported herein. This Certificate shall not be reproduced except in full, without the written approval of DB Labs.

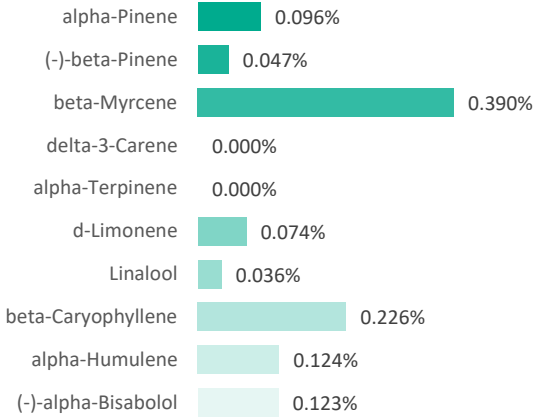
prepared for: GOOD CBD SHOP
 1800 SANDY PLAINS IND PKWY SUITE 104
 MARIETTA, GA 30066

MARDI GRAS

Batch ID:	N/A	Test ID:	2647505.0027
Reported:	12-Nov-2019	Method:	TM10
Type:	Plant		
Test:	Terpenes		


TERPENE PROFILE


Compound	%(w/w)	mg/g
(-)-alpha-Bisabolol	0.123	1.23
Camphene	0.004	0.04
delta-3-Carene	0.000	0
beta-Caryophyllene	0.226	2.26
(-)-Caryophyllene Oxide	0.000	0
p-Cymene	0.000	0
Eucalyptol	0.000	0
Geraniol	0.000	0
alpha-Humulene	0.124	1.24
(-)-Isopulegol	0.000	0
d-Limonene	0.074	0.74
Linalool	0.036	0.36
beta-Myrcene	0.390	3.9
cis-Nerolidol	0.000	0
trans-Nerolidol	0.000	0
Ocimene	0.001	0.01
beta-Ocimene	0.043	0.43
alpha-Pinene	0.096	0.96
(-)-beta-Pinene	0.047	0.47
alpha-Terpinene	0.000	0
gamma-Terpinene	0.000	0
Terpinolene	0.001	0.01
	1.165%	11.65

PREDOMINANT TERPENES


NOTES:
0

FINAL APPROVAL

 Daniel Weidensaul 12-Nov-2019 1:10 PM	 David Green 12-Nov-2019 2:45 PM
---	--

PREPARED BY / DATE

APPROVED BY / DATE

Testing results are based solely upon the sample submitted to Botanacor Laboratories, LLC. Botanacor Laboratories, LLC warrants that all analytical work is conducted professionally in accordance with all applicable standard laboratory practices using validated methods. Data was generated using an unbroken chain of comparison to NIST traceable Reference Standards and Certified Reference Materials. This report may not be reproduced, except in full, without the written approval of Botanacor Laboratories, LLC. ISO/IEC 17025:2005 Accredited A2LA Certificate Number 4329.02

MARDI GRAS

Batch ID:	N/A	Test ID:	5301115.006
Reported:	14-Nov-2019	Method:	TM16
Type:	Plant		
Test:	Pesticides		

PESTICIDE RESIDUE

Compound	Dynamic Range (ppb)	Result (ppb)	Compound	Dynamic Range (ppb)	Result (ppb)
Acephate	44 - 2033	ND*	Malathion	263 - 2033	ND*
Acetamiprid	44 - 2033	ND*	Metalaxyl	263 - 2033	ND*
Avermectin	263 - 2033	ND*	Methiocarb	44 - 2033	ND*
Azoxystrobin	44 - 2033	ND*	Methomyl	44 - 2033	ND*
Bifenazate	263 - 2033	ND*	MGK 264 1	263 - 2033	ND*
Boscalid	263 - 2033	ND*	MGK 264 2	263 - 2033	ND*
Carbaryl	44 - 2033	ND*	Myclobutanil	44 - 2033	ND*
Carbofuran	44 - 2033	ND*	Naled	263 - 2033	ND*
Chlorantraniliprole	263 - 2033	ND*	Oxamyl	44 - 2033	ND*
Chlorpyrifos	263 - 2033	ND*	Paclobutrazol	44 - 2033	ND*
Clofentezine	263 - 2033	ND*	Permethrin	263 - 2033	ND*
Diazinon	263 - 2033	ND*	Phosmet	263 - 2033	ND*
Dichlorvos	263 - 2033	ND*	Prophos	263 - 2033	ND*
Dimethoate	44 - 2033	ND*	Propoxur	44 - 2033	ND*
E-Fenpyroximate	263 - 2033	ND*	Pyridaben	44 - 2033	ND*
Etofenprox	44 - 2033	ND*	Spinosad A	44 - 2033	ND*
Etoxazole	44 - 2033	ND*	Spinosad D	44 - 2033	ND*
Fenoxycarb	263 - 2033	ND*	Spiromesifen	44 - 2033	ND*
Fipronil	263 - 2033	ND*	Spirotetramat	263 - 2033	ND*
Flonicamid	44 - 2033	ND*	Spiroxamine 1	44 - 2033	ND*
Fludioxonil	263 - 2033	ND*	Spiroxamine 2	44 - 2033	ND*
Hexythiazox	263 - 2033	ND*	Tebuconazole	263 - 2033	ND*
Imazalil	44 - 2033	ND*	Thiacloprid	44 - 2033	ND*
Imidacloprid	44 - 2033	ND*	Thiamethoxam	44 - 2033	ND*
Kresoxim-methyl	263 - 2033	ND*	Trifloxystrobin	44 - 2033	ND*

* ND = None Detected (Defined by Dynamic Range of the method)

N/A

FINAL APPROVAL


 Alex Smith
 14-Nov-2019
 3:23 PM

PREPARED BY / DATE


 David Green
 14-Nov-2019
 3:32 PM

APPROVED BY / DATE

Testing results are based solely upon the sample submitted to Botanacor Laboratories, LLC, in the condition it was received. Botanacor Laboratories, LLC warrants that all analytical work is conducted professionally in accordance with all applicable standard laboratory practices using validated methods. Data was generated using an unbroken chain of comparison to NIST traceable Reference Standards and Certified Reference Materials. This report may not be reproduced, except in full, without the written approval of Botanacor Laboratories, LLC.